

# ELECTRIC SUBMERSIBLE SEWAGE PUMPS



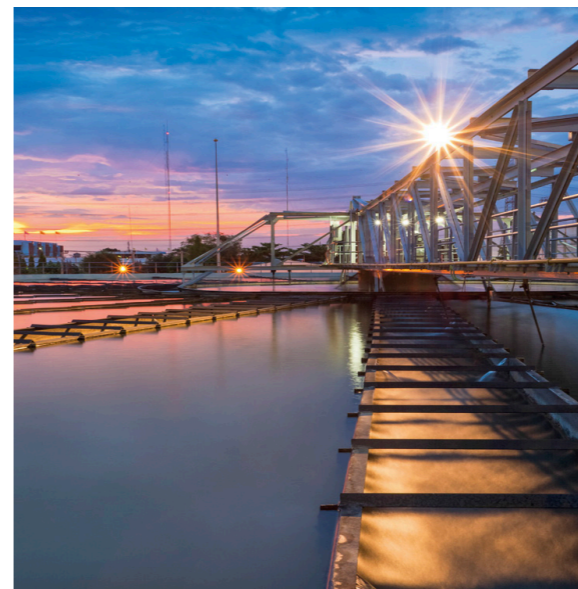
**caprari**

**NEW  
GENERATION**

# THE PUMP THAT NEVER STOPS



**caprari**



THE SAME PUMP FOR **ALL APPLICATIONS**

**IDEAL FOR**

**WASTEWATER TRANSPORT**

**WASTEWATER TREATMENT**

**INDUSTRY**

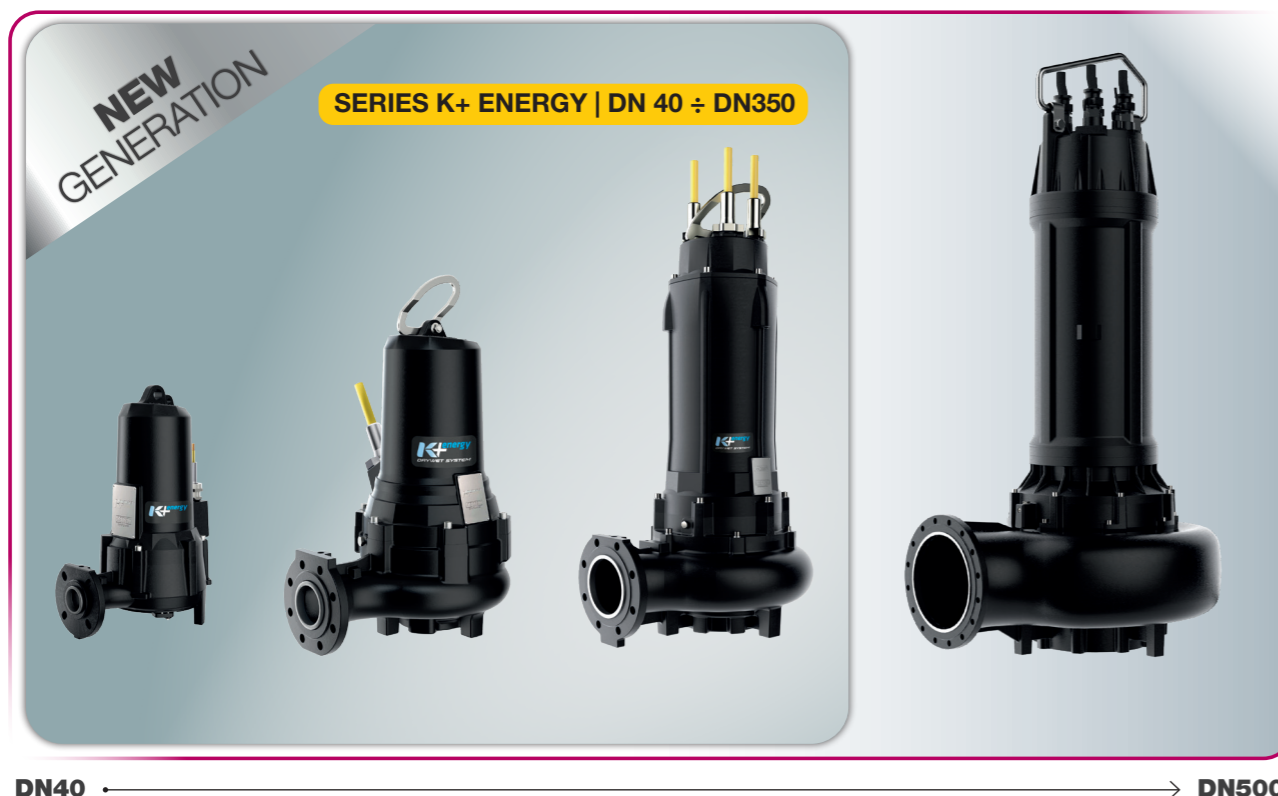
**STORMWATER**

## THE NEW GENERATION OF PUMPS IN THE WORLD OF WASTEWATER

The wide range of the K+ series is designed **to pump wastewater** containing gases and solids

The excellent performance of the hydraulic profiles ensures **maximum efficiency**

The special compact size of the pump ensure **total reliability** and **ease of installation**



### TECHNICAL FEATURES

Flow rate up to 1700 l/s	Head up to 67 m	Power up to 345 kW	Frequency 50-60 Hz	ATEX version Yes
-----------------------------	--------------------	-----------------------	-----------------------	---------------------



IN WET PIT



IN DRY CHAMBER

## WHY CHOOSE K+ ENERGY?

Electrical efficiency, hydraulic performance and Caprari international patents for **the best wastewater pump in the world**



### IE3 ELECTRICAL EFFICIENCY CLASS

K+ Energy pumps are designed to ensure high efficiency and reduced energy costs

#### Exclusive



### ANTI-CLOGGING SYSTEM

1. **The widest free passages** on the market
2. **Maximum durability** of mechanical seal
3. Impeller **cleaning** and axial thrust compensation for bearing **protection**
4. **Anti-sedimentation system** for solids

#### International Patent

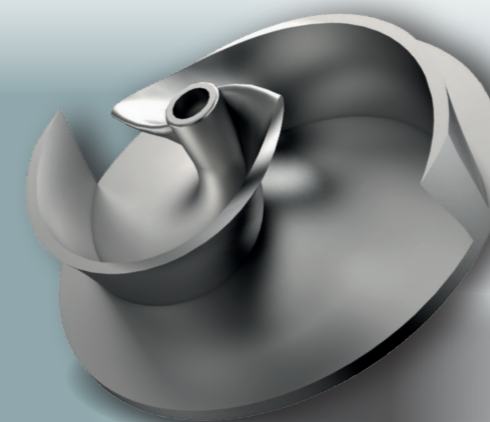


### OIL COOLING SYSTEM

1. Application **versatility**
2. **Simple** operation
3. **Maximum** operating **efficiency**

# new

The **K+ ENERGY** range is now more extensive thanks to the new electric pump models with **twin-blade open impeller**, which ensure **excellent efficiency above 80%**.



### HIGH EFFICIENCY IMPELLER

- **Open twin blade** construction: **efficiency above 80%**
- Maximum **wear resistance**: hardened cast iron

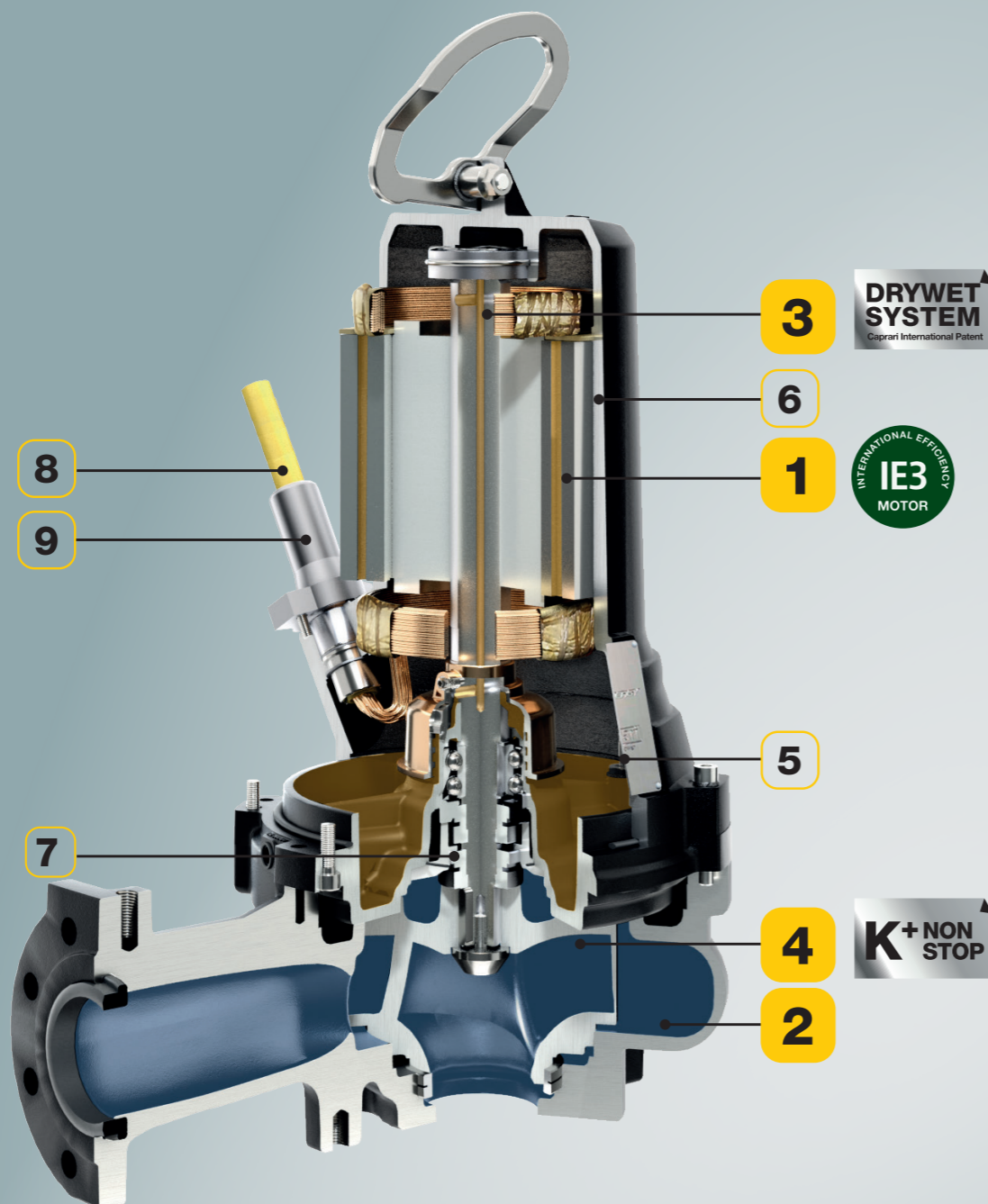
#### International Patent

### IMPELLER SETTING SYSTEM

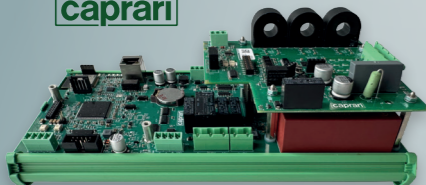


- **Fast** impeller disc setting through external screw
- **Easy** maintenance

# THE BEST PUMP IN THE WORLD OF WASTEWATER



**GREEN  
BOX**  
caprari



Connect and monitor pump performance in real time from your smartphone, tablet or PC via the Caprari App.

## ANTI-CLOGGING FUNCTION

- Stop and counter-rotate the pump: ideal solution in the event of blockages caused by solids

## CONSUMPTION OPTIMIZATION AND FAILURE PREVENTION (patented software)

- Maintains pump at best efficiency point (BEP): reduced energy consumption

## 1 IE3 ELECTRICAL EFFICIENCY CLASS

- **High motor efficiency**
- Reduced energy costs

## 2 HIGH-EFFICIENCY HYDRAULICS

- **Painted surfaces:** hydraulic profile optimization with high-level finish

## 3 OIL COOLING SYSTEM

- **Standard** on all models
- **S1 operation** in dry chamber

*International Patent*

## 4 ANTI-CLOGGING SYSTEM

- **The widest free passages** in the market
- **Maximum operational safety**

*Exclusive*

## 5 CONDUCTIVITY PROBE IN OIL CHAMBER

- **Standard** on all models even for ATEX version
- **Motor protection:** the alarm signal is sent to the panel in case of failure of the first mechanical seal

*International Patent*

## 6 H CLASS ELECTRICAL INSULATION

- The **best resistance** to thermal changes (up to 180 °C)
- **Longer service life** of the motor

## 7 DOUBLE MECHANICAL SEAL

- **Double protection** of the electric motor
- **Commercial type seals:** easy to find
- **Ease of access:** it is not necessary to remove the motor to replace the seals

## 8 NSSHOU-J DOUBLE SHEATH CABLE

- The best **resistance to liquids** containing chemicals and oils
- The best **mechanical and thermal resistance**

*Exclusive*

## 9 EASY MAINTENANCE PLUG

- **Easy to disconnect** and **lower maintenance time:** the electric cable can be unplugged from the pump

# Wastewater Transport and Treatment

Boosting and Distribution of surface water

Water Collection and Distribution

Pump Control Technology



Caprari S.p.A.

Via Emilia Ovest, 900

41123 Modena (Italy)

Tel. +39 059 897611

email: [info@caprari.it](mailto:info@caprari.it)

[www.caprari.com](http://www.caprari.com)